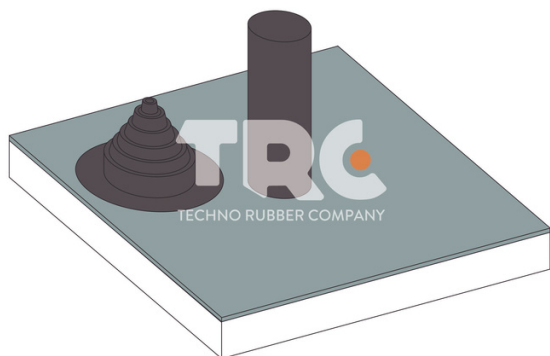


Pipeseal

Step by step guide on installing a pipe seal to your next EPDM Roofing project.

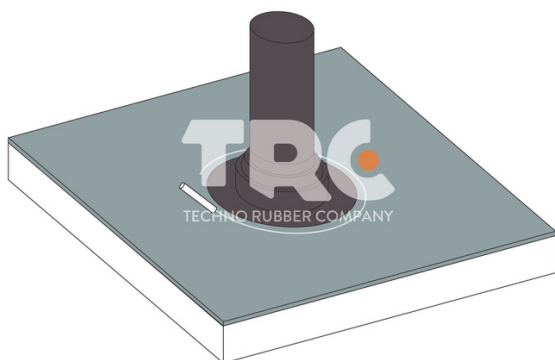
1



Step 1

Place pipe seal over the top of the pipe and cut with a knife or scissors to ensure a snug fit.

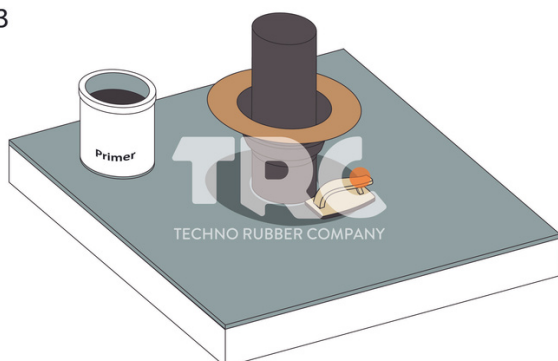
2



Step 2

Stretch boot over the pipe until the flange touches the deck, mark the perimeter with a crayon or similar, allowing an additional 2cm.

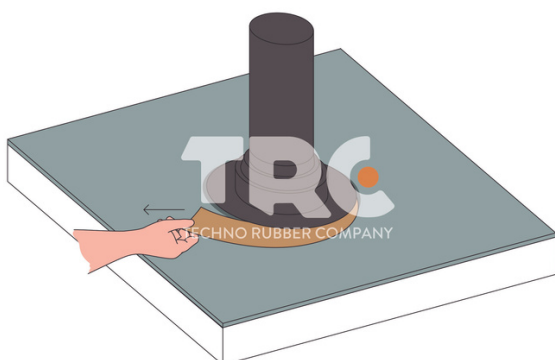
3



Step 3

Fold the pipe boot up or remove and apply primer to the marked area using the quick scrubber pad and handle, allow to dry.

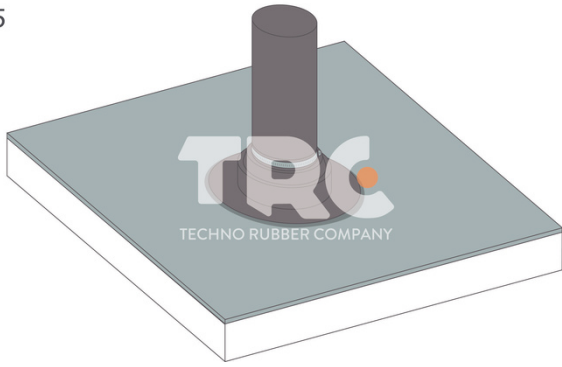
4



Step 4

Reposition pipe seal, locate the join in the release paper and slowly remove at a shallow angle smoothing as you go with your hand. Once the backing paper has been totally removed roller using silicone roller.

5



Step 5

Apply a small bead of silicone sealant to the top of the pipe seal and secure with jubilee clip.